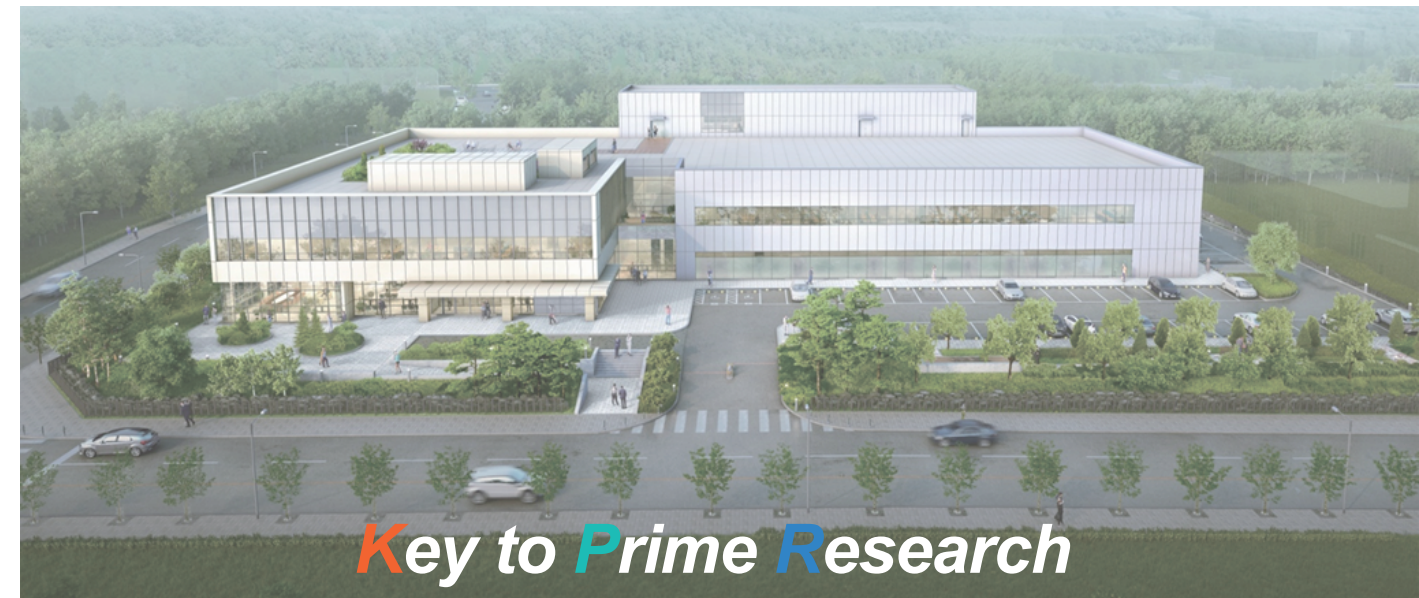




## KEYPRIME RESEARCH

Trustworthy, Creative, and Collaborative Research Institute



### | Osong Campus |

(28161) 193, Osongsaengmyeong 1-ro, Osong-eup, Heungdeok-gu,  
Cheongju-si, Chungcheongbuk-do, Republic of Korea

**E-MAIL** [info@keyprime.com](mailto:info@keyprime.com)

**TEL** +82) 043-280-0991

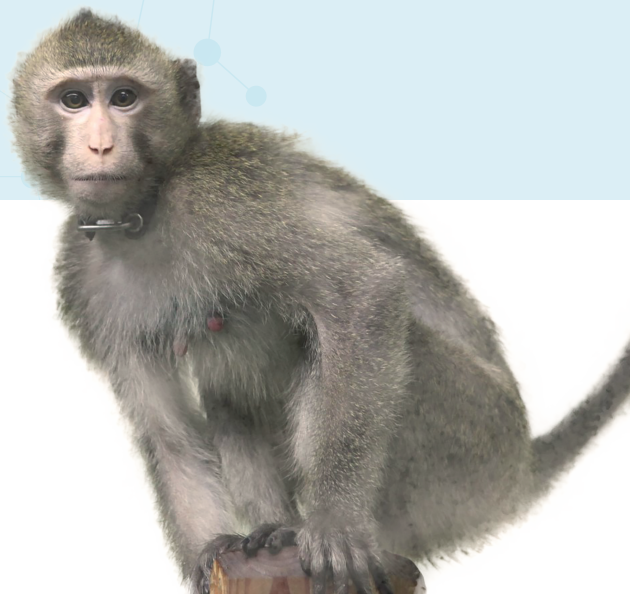
**FAX** +82) 043-280-0919

Visit our site at [www.keyprime.com](http://www.keyprime.com)

***“KPR will do best to be the global non-clinical CRO  
providing world-class quality and service and  
submitting accurate and reliable data.”***

# Keyprime Research(KPR)

## – GLP certified Non-Human Primate (NHP) specialized CRO



### What is in the KPR?

#### Capacity

- Total 1,150 monkeys can be tested at one time

#### Source of Monkeys

- Vietnam (single source origin)
- Secured stable animal resources

#### Site area

- 10,595 m<sup>2</sup> [1F:4,523 m<sup>2</sup> & 2F:837 m<sup>2</sup>]
- Various housing environments (play ground, mingleable individual cage, group cage, etc.)



#### 01. Service Area

- General Tox. Study
- Efficacy Study
- Inhalation Study
- Safety Pharmacology
- PK/PD
- Ophthalmology
- CNS

#### 02. Administration Route

- PO/IV/SC/IM
- Intrathecal
- Intravitreal
- Intraarticular
- Intranasal
- Intratracheal

#### 03. Computerized System for nonclinical study and data management

- Provantis® for GLP Tox (Integrated preclinical software)
- Submit™ for SEND (Standard for the Exchange of Nonclinical Data)

#### 04. Evaluation & Analysis

- Clinical pathology/Histopathology
- Bioanalysis (tissues, blood)
- Cytokine/Chemokine Analysis
- Anti-drug antibody Assay
- mRNA Analysis
- Neurobehavioral Test
- Monkey Telemetry
- Immunophenotyping



Clinical pathology /Histopathology

- Key parameters in the evaluation of safety studies
- Provides important clues to interpretation of various toxic phenomena



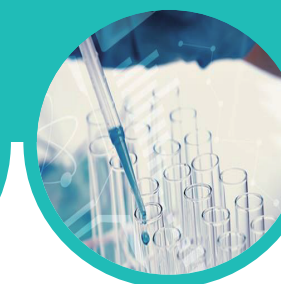
Bioanalysis (PK/TK)

- Evaluation of concentration, absorption, distribution, metabolism, and excretion of drugs in biological samples such as blood and tissues



Cytokine/Chemokine Analysis

- Used as an evaluation index for changes in immune response caused by drugs



Anti-drug antibody Assay

- Used as an evaluation index for immunogenicity